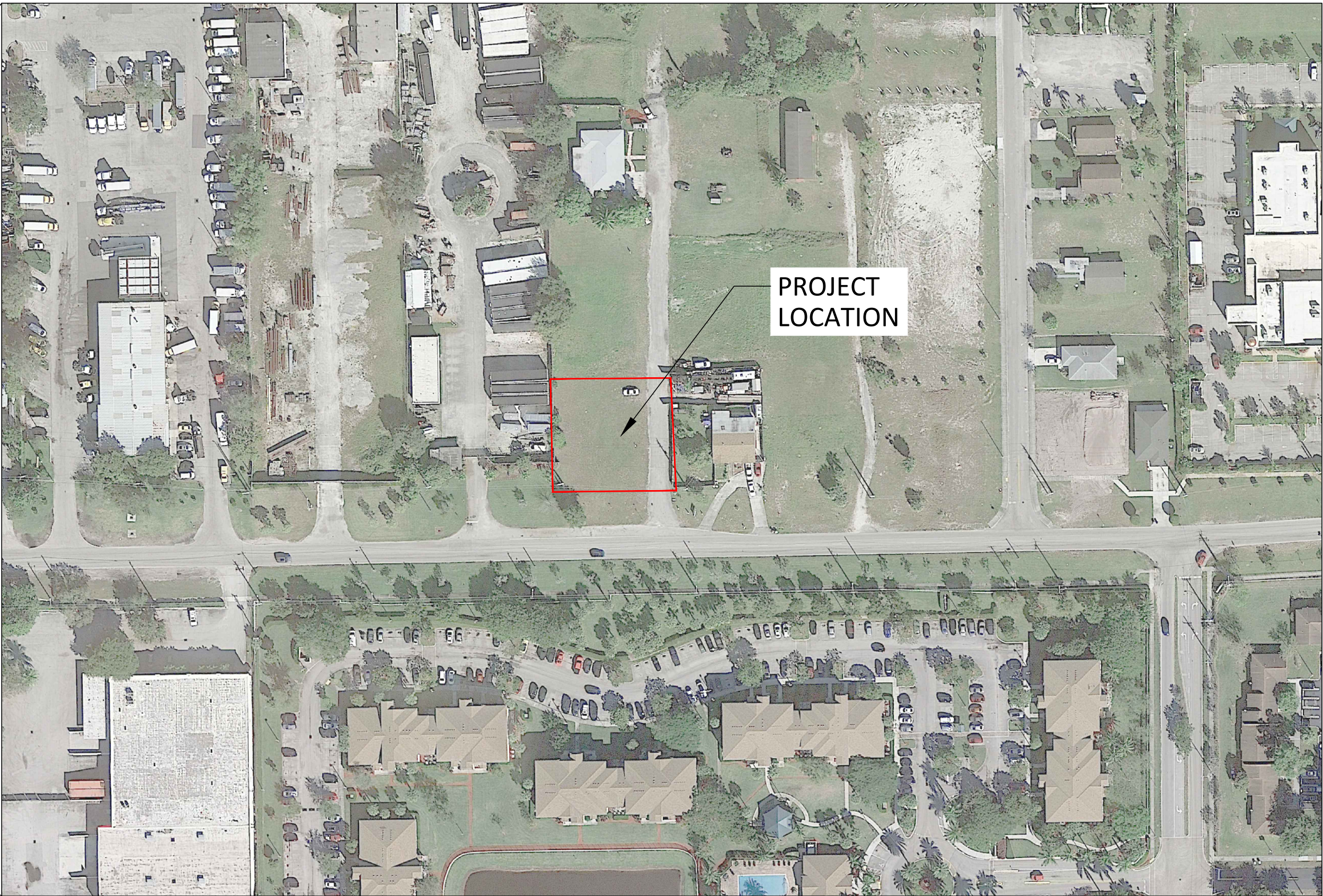
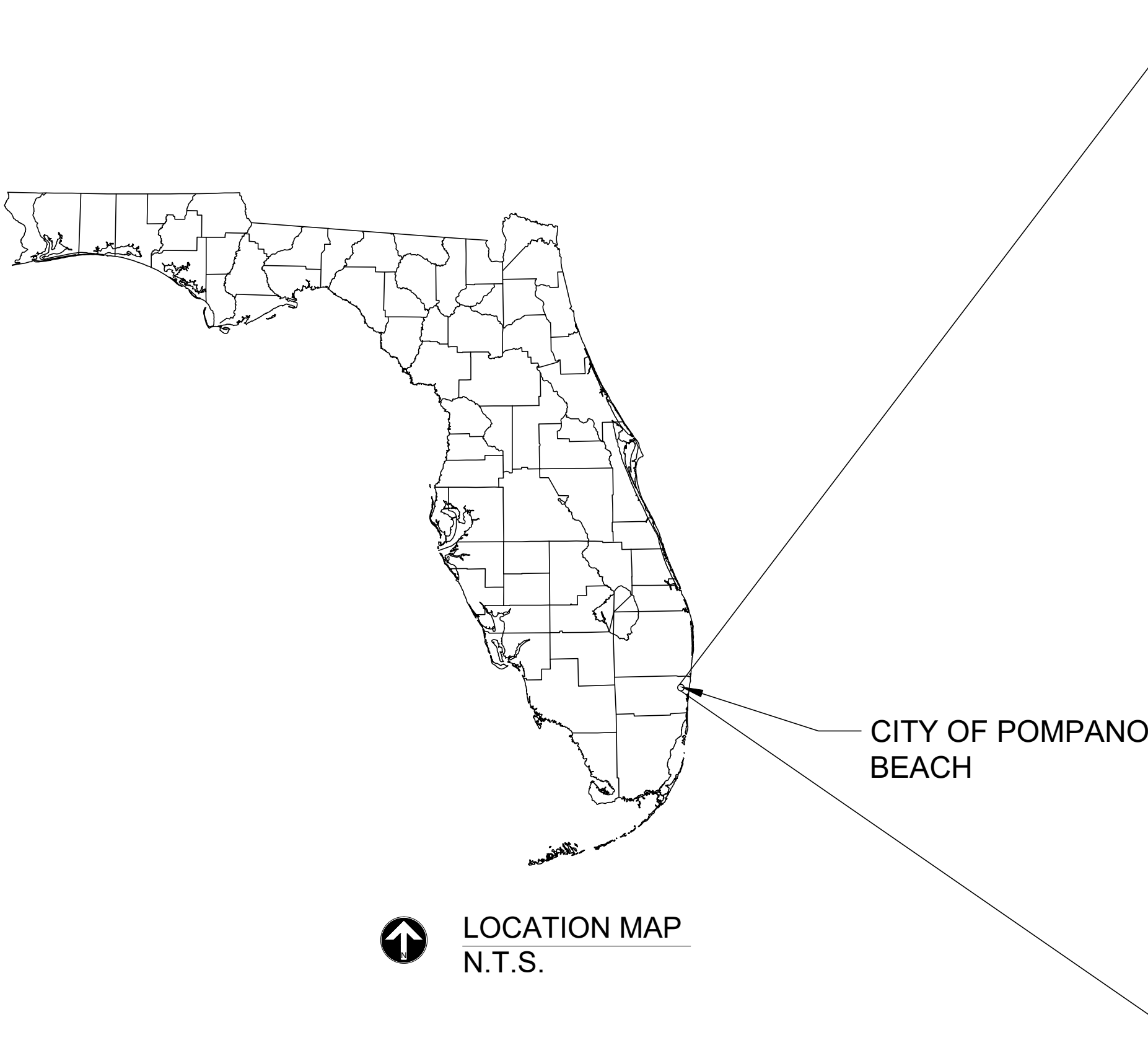


CIVIL SET OF PLANS FOR
POMPANO BEACH TRIPLEX

FOLIO: 484227000780
POMPANO BEACH, FL 33069



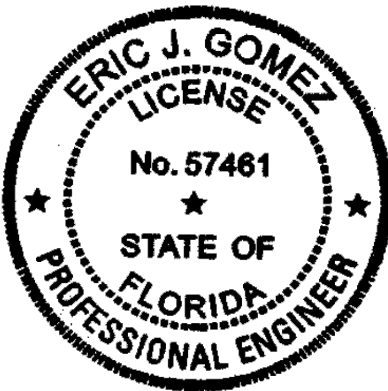
LOCATION MAP
SCALE: N.T.S.

INDEX OF SHEETS

SHEET NO.	DESCRIPTION
C-0.0	COVER SHEET
C-1.0	PAVING, GRADING, AND DRAINAGE PLAN
C-2.0	WATER AND SEWER PLAN
C-3.0	WATER AND SEWER DETAILS
C-4.0	WATER AND SEWER DETAILS

PREPARED BY

EGSC ENGINEERING CONSULTANTS
1701 NW 112th AVENUE #103
MIAMI, FL 33172
ERIC J. GOMEZ
LICENSE No. 57461
(305) 553-5457



THIS ITEM HAS BEEN DIGITALLY SIGNED AND SEALED BY ERIC J. GOMEZ, P.E. ON THE DATE ADJACENT TO THE SEAL. PRINTED COPIES OF THIS DOCUMENT ARE NOT CONSIDERED SIGNED AND SEALED AND THE SIGNATURE MUST BE VERIFIED ON ANY ELECTRONIC COPIES.

FOLIO: 484227000780
SECTION: 27 TOWNSHIP: 48S RANGE: 42E

PROJECT DESCRIPTION:

DESIGN OF PAVING, GRADING, AND DRAINAGE SYSTEM AS WELL AS
WATER AND SEWER SERVICE CONNECTIONS FOR THE SUBJECT
PROPERTY AS PER THE CITY OF POMPANO BEACH REQUIREMENTS.



Call 811 or visit sunshine811.com two full business days before digging to have buried facilities located and marked.
Check positive response codes before you dig!

